

Connecticut Conservation and Development Policies Plan 2025-2030

Feedback Needed from Continuing
Committee on Planning and
Development

June 15, 2023

Introduction

Office of Responsible Growth (ORG) staff have drafted the following potential framework for the C&D Plan 2025-30

Based on preliminary review of state agency plans and programs, and early discussions with state agency staff

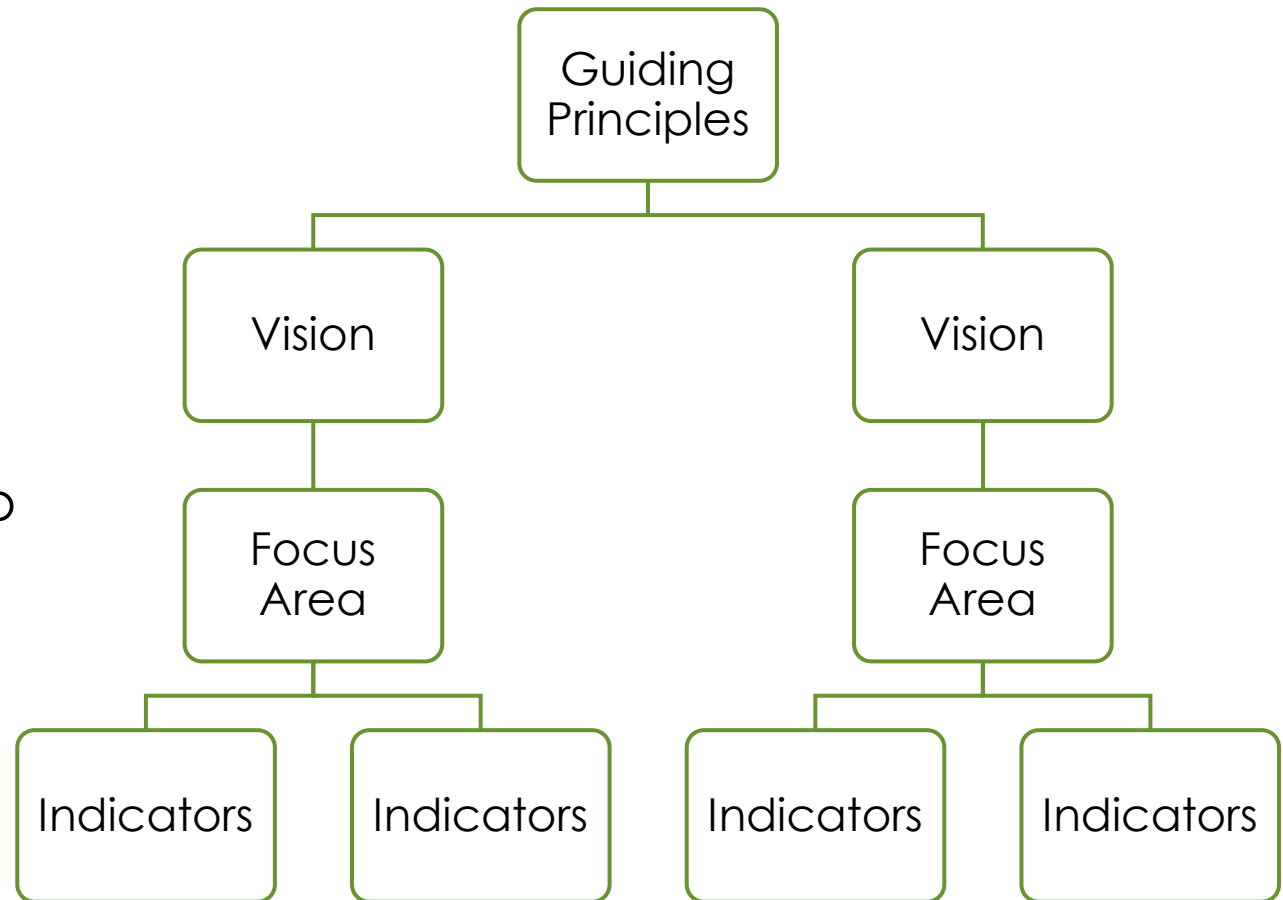
ORG staff will work with state agencies over the summer to refine potential policy and objective areas, performance measurements and potential implementation methods

Broader stakeholder involvement planned for the fall

Seeking Continuing Committee feedback on following draft framework and focus areas

Proposed New Plan Framework

- **Guiding Principles** – Values that Permeate All Aspects of the Plan and Unify the Vision and Objectives
- **Vision** – Broad Priorities for the 2025-30 Planning Period
- **Focus Areas** – Specific Objective Areas to Guide Policy Development and Plan Implementation Across Agencies
- **Performance Indicators** – Data and Indices to Guide Implementation and Monitor Progress



DRAFT

Guiding Principles of the Plan



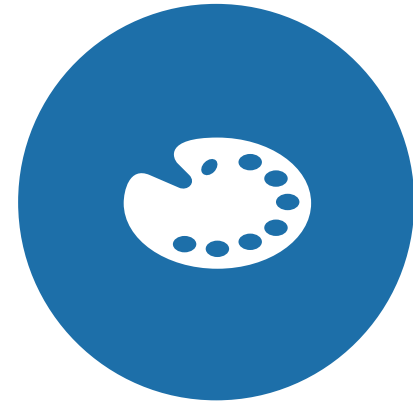
SUSTAINABLE

Balance the ecological, social and economic dimensions of development to meet current needs without compromising the future



EQUITABLE

Ensure a high quality of life for all residents, regardless of income, race, ethnicity, gender, ability or age



VIBRANT

Enhance and maintain diverse, innovative, thriving communities, while preserving unique historic and cultural features

Vision

Healthy residents and environment

Prosperous economy

Housing to serve current and future residents

Connected communities

Stewardship of resources

DRAFT

Healthy Residents and Environment

Potential Focus Areas

| Focus Area | Policy and Objective Areas to Explore | Related Indicators |
|----------------------|---|---|
| Public Health | Built environment and socio-economic determinants | Asthma, blood-lead, obesity, education, health care |
| Individual Health | Built environment impacts to physical and mental health | Access to: health care, parks and recreational lands, food, education, arts and cultural resources; crime |
| Environmental Health | Land and resource conservation | Air quality, water quality, ecosystem functioning; threatened and endangered species |
| | Public safety | Environmental health hazards, natural hazards mitigation, environmental design |
| | Environmental justice | Inequities in environmental conditions and public health |

DRAFT

Prosperous Economy

Potential Focus Area

| Focus Area | Policy and Objective Areas to Explore | Related Indicators |
|------------------------------|---|---|
| Individual Economic Security | Jobs accessibility | Pov erty, employment data, food security, housing and transportation costs, personal non-mortgage debt |
| | Workforce training accessibility | Education and training site locations relative to population needs, transit and other amenities; programs to connect students to training and education |
| | Child care accessibility | Childcare av ailability and location relative to areas of need |
| Workforce | Diversity, underemployment, accessibility | Employment by sector; underemployment by location, demographics; accessibility to: childcare, housing, transportation |
| | Career paths | Av ailability and accessibility of adult-ed and skills training programs by sector and location |

DRAFT

Prosperous Economy

Potential Focus Area

| Focus Area | Policy and Objective Areas to Explore | Related Indicators |
|--------------|--|---|
| Businesses | Diversity by sector, size and type | Businesses by sector and size, minority-owned, jobs by sector |
| | Persistence | Maintenance and/or growth of businesses |
| | Manufacturing | Engagement in supply chains, proximity to existing workforce and workforce needs, proximity to transportation networks |
| | Agribusiness | Working farms by type (includes aquaculture), farmers seeking land, land availability, training programs |
| | Arts and Culture | Identification, collection and analysis of impact metrics; identification of workforce development needs and program development to address |
| Institutions | Anchor institution-community collaborations | Partnerships |
| | Anchor institution direct investments in housing and economic development objectives | Investments, projects |

DRAFT

Prosperous Economy

Potential Focus Area

| Focus Area | Policy and Objective Areas to Explore | Related Indicators |
|-----------------------------|--|--|
| Neighborhood Revitalization | NRZs and Opportunity Zones | Number, capacity of NRZs; Opportunity Zone investments, Social Equity Council investments |
| Brownfields | Remediation/ reuse consistent with neighborhood context | Remediation, reuse/ conversions meeting other housing, transportation, economic development objectives |
| Greyfields | Identification and repurposing of underutilized sites | Number of properties repurposed by property characteristics, reuse type and location |
| Infill Development | Identification of infill supportive development areas; nodal development | Identification of areas, development assistance towards infill projects |

DRAFT

Housing to Serve Current and Future Residents

Potential Focus Areas

| Focus Area | Policy and Objective Areas to Explore | Related Indicators |
|-----------------------|---|--|
| Housing Stock | Diversity in housing stock | Household types; tenure and type of units; rehab, conversion and new construction; affordable unit supply |
| Housing Location | Sustainable supply of housing - connection to existing infrastructure, economic and cultural resources; nodal development | Number, type and location of units relative to infrastructure, resources and climate vulnerabilities; housing and transportation costs; flood insurance costs; vehicle miles travelled |
| Household Cost Burden | Household spending on housing and transportation | Cost burdens across various income bands and household types, affordable housing supply |

Connected Communities

Potential Focus Areas

| Focus Area | Policy and Objective Areas to Explore | Related Indicators |
|--------------------------------|--|---|
| Multi-Modal Transportation | Transit and micro mobility supported by and supportive of housing and economic development | Ridership, accessibility, connections between modes, connections between activity centers |
| | Non-motorized transportation supporting healthy residents and quality of life | Complete street infrastructure and accessibility |
| | Maintenance, resilience and improvement of existing road network in support of comprehensive transportation, housing and economic development objectives | Conditions of existing network, average daily traffic relative to transit potential |
| Sewer and Water Infrastructure | Existing systems adequacy for current and future needs; efficient usage of existing systems | Systems usage and capacity, unserved areas, customer rates |
| | Maintenance, resilience and improvement of existing systems in support of comprehensive conservation and development objectives | Water quality; maintenance, upgrade and climate adaptation needs for treatment plants and pipe networks |

DRAFT

Connected Communities

Potential Focus Areas

| Focus Area | Policy and Objective Areas to Explore | Related Indicators |
|------------------------|---|---|
| Digital Infrastructure | Broadband accessibility | Unserved areas, variation of services, sufficient speeds |
| | Smart cities/ Internet of Things technology | Smart city technology pilot programs and results |
| Regionalism | Intergovernmental collaboration | Number of intergovernmental mechanisms for priority areas: stormwater management, climate adaptation, solid waste, others |
| | Nodal development | Identification of regional activity centers; investments and development in activity centers |

DRAFT

Stewardship of Resources

Potential Focus Areas

| Focus Area | Policy and Objective Areas to Explore | Related Indicators |
|---|---------------------------------------|---|
| Natural Resource Quality and Preservation | Air | Conditions, geographic deficiencies, stressors |
| | Water | Watershed conditions/ water quality; forested land adjacent to surface water by watershed; watershed land protection; water bodies supporting aquatic life; stressor, response and exposure indicators; dam removals as appropriate |
| | Biodiversity | Key habitats on state lands, comprehensive management areas, connectivity of habitat areas |
| | Open space | Protected open space fragmentation, habitat, public accessibility, management, and stressors; unprotected forest, natural heritage areas |
| | Agriculture | Prime agricultural soils, working farms by type, farmers seeking land, climate adaptation, stressors |

DRAFT

Stewardship of Resources

Potential Focus Areas

| Focus Area | Policy and Objective Areas to Explore | Related Indicators |
|---------------------------|---|---|
| Climate Change Adaptation | Greenhouse gas emissions | Emissions by sector, programs to reduce |
| | Disaster mitigation | Projects to minimize vulnerabilities associated with extreme heat, wind, flooding, drought, winter storm, sea-level rise and fire |
| | Public facilities and infrastructure resilience | Identification of vulnerable sites, alternatives and implementation of projects |
| | Vulnerable populations | Resiliency projects in neighborhoods with vulnerable populations |
| Energy | Equitable use of renewable technologies | residential solar installations by household income, movement towards zero carbon electricity supply, procurement of clean energy resources, electrification of building and transportation sectors |
| | Siting of grid-scale renewables | Identification of sites, installation |
| | Demand management | Incentives for commercial/ industrial demand management; use of new technologies in rehabs and new construction projects |

DRAFT

Stewardship of Resources

Potential Focus Areas

| Focus Area | Policy and Objective Areas to Explore | Related Indicators |
|---------------------------------|--|---|
| Historic and Cultural Resources | Preservation, climate adaptation and accessibility | Resources protected, participation in certified local government programs, participation in Municipal Cultural District program |
| Solid Waste | Equitable diversion efforts | Diversion (reduce, reuse, recycle, compost) programming locations/ audiences |
| | Materials management | Number, type of facilities; facilities locations relative to vulnerable populations |

Thoughts?

Concerns with the structure
(guiding principles, vision, focus
areas and objectives/ policies)?

Are draft **focus areas**
appropriate priorities for the
2025-30 planning horizon?

What's missing?

Please provide any feedback to [Rebecca Augur](#) (860-418-6343) by June 30th.